



HIVE

15 BEACON PARK ROAD
UPTON
POOLE
BH16 5NZ



presented by
MATTHEW WILSON
HIVE Partner for Poole
01202 122 002



Agent's introduction

This beautifully presented detached bungalow is situated in a quiet road, within walking distance of Upton Heath and Upton Country Park. It has recently been refurbished to a high standard and features a stunning open-plan kitchen/dining/living space.

Seller's introduction

We've really enjoyed extending and refurbishing the bungalow to make it into a lovely family home. We've enjoyed being in the garden too, it's very secluded and peaceful.







Property highlights

Bespoke kitchen with feature island, Neff integrated appliances, Quooker instant boiling water tap and Karndean flooring

Separate utility room

Bifold doors leading to a south facing garden with new summerhouse

Velux windows

Off road parking for 4+ vehicles

Just over a mile to Upton Country Park and 2.5 miles from Lytchett Bay









3 double bedrooms

1 bathroom, 1 shower room

Large open plan kitchen/living/dining room

Separate utility room

Summerhouse and outside store

Accommodation overview





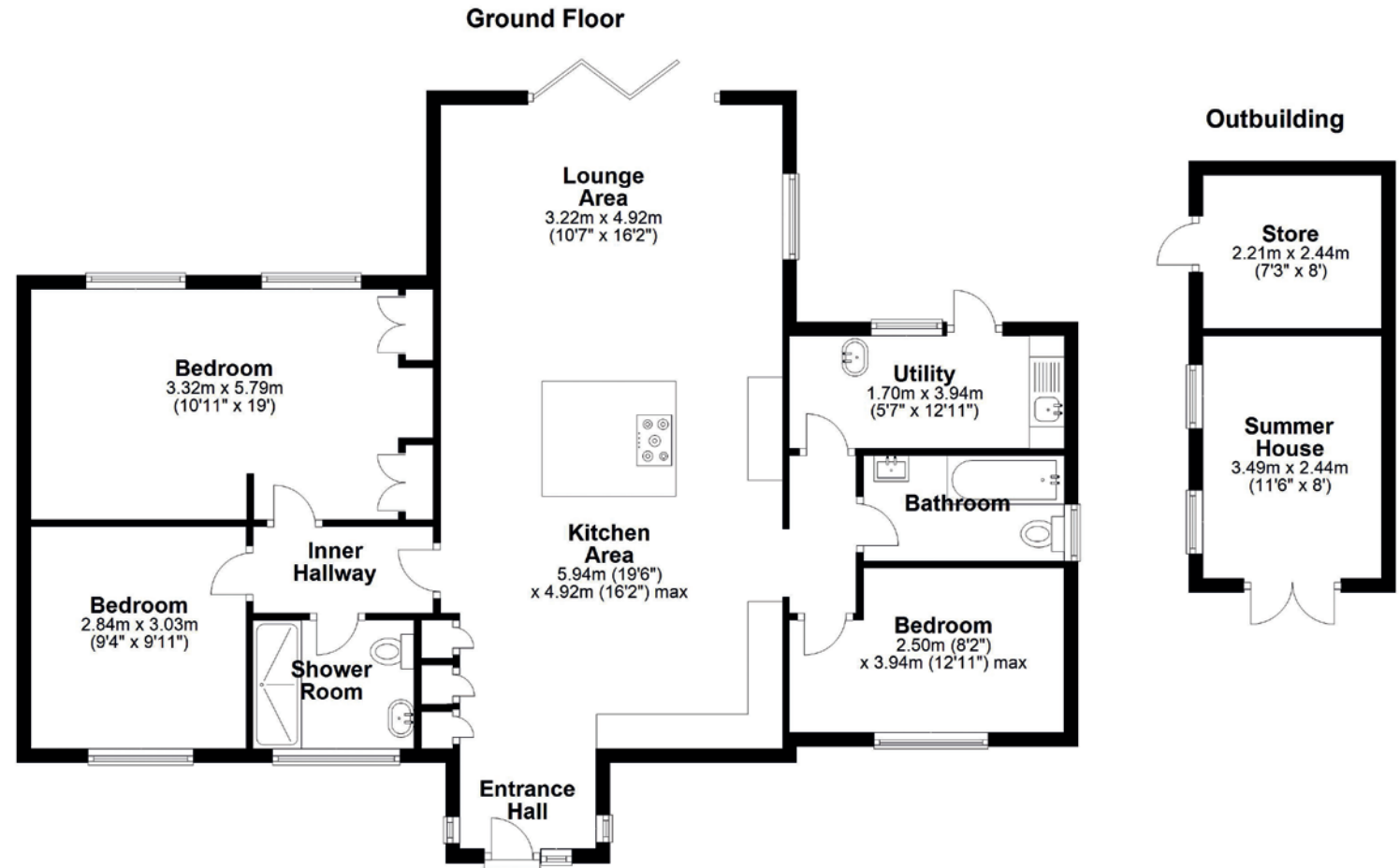


MATTHEW WILSON
HIVE Partner for Poole/Broadstone

An immaculate extended bungalow situated in a quiet, sought-after road. The property has been renovated to a high standard and the Velux windows and bifold doors let in lots of natural light. Popular schools are nearby, as well as lovely walks at Lytchett Bay and Upton Country Park. Poole town centre is also just 4.5 miles away.



Scan the QR code for my latest property listings and social channels.



Total area: approx 123.6 sq metres (1330.2 sq ft)





HIVE & Partners, Poole, Broadstone & Corfe Mullen c/o The Hive, Wilson House, 2 Lorne Park Road, Bournemouth BH1 1JN
01202 122 002 | www.hiveandpartners.co.uk